

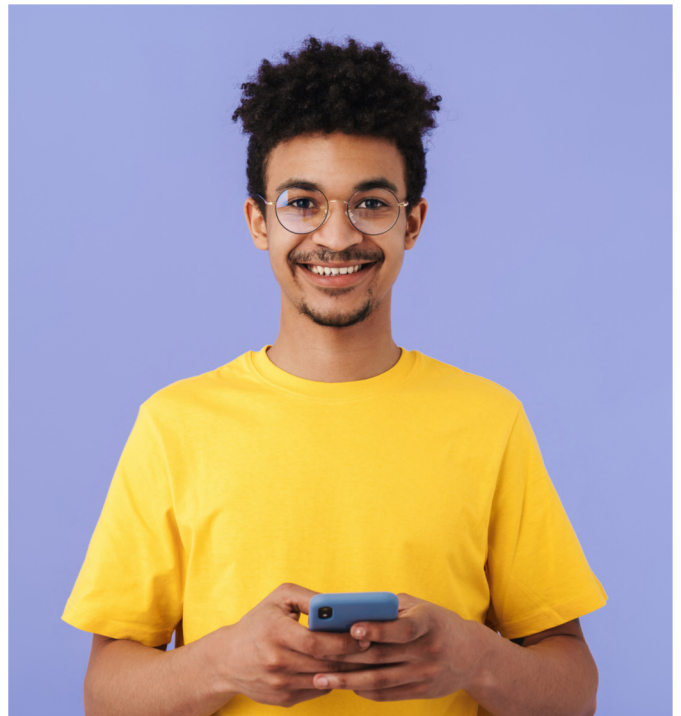


# EPIC news!

LSU Healthcare Network has partnered with LCMC Health for use of their electronic health record known as Epic.

With the Epic MyChart patient portal, your doctors and medical record are at your fingertips.

If you have an existing MyChart account with LCMC Health, **you do not** need to create a new account.



**View future appointments**  
& request/schedule  
your next one



**Request**  
prescription refills



**Message**  
your provider



**Print**  
immunization records



**Access**  
your test results



**Manage**  
healthcare for others

## Create an account using your activation code.

- 1 Visit [lsuhn.com/patientportal](https://lsuhn.com/patientportal)
- 2 Select **"Sign up or Log in"** (this will take you to an LCMC page)
- 3 Select **"Sign up now"**
- 4 Follow the **instructions** to activate your account
- 5 Download the **MyChart** app

## No code?

- 1 Visit [LSUHN.com/patientportal](https://lsuhn.com/patientportal)
- 2 Select **"Sign up or Log in"** (this will take you to an LCMC page)
- 3 Select **"Sign up now"**
- 4 Select **"Sign up online"** under **"No Activation code?"**
- 5 Follow the instructions to verify your identity

Download the MyChart app  
from the Apple App Store or Google Play



**LSU Health**  
Healthcare Network



# Your healthcare at your fingertips

LSU Healthcare Network (LSUHN) has partnered with LCMC Health for use of their electronic health record (EHR) known as Epic.



## Existing LCMC Health MyChart Account?



Login to your **existing LCMC Health MyChart** to access your LSUHN medical record



**Do not** try to access your LSUHN medical record using the LSU Health MyChart organization connection



LSUHN medical record information prior to May 16, 2022 **will not be** visible in your MyChart



As of May 16, 2022, established LSUHN patients can message their existing LSU provider **once they are seen in clinic or via telemedicine; or 30 days prior to their scheduled appointment**



## What if I see the same provider at a LCMC Health facility and a LSUHN facility?



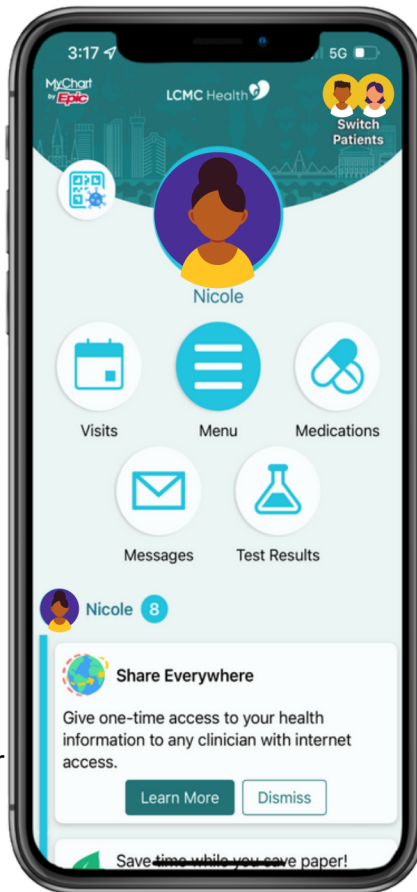
Your provider will have access to your one chart through Epic



You should select your provider and their location when sending a message through MyChart



Charges may vary for the same provider depending on the facility and your insurance carrier



## No MyChart Account?



Visit [lsuhn.com/patientportal](https://lsuhn.com/patientportal) to create an account using your activation code



Follow the **instructions** to activate your account



Download the **MyChart** app



Access your LSUHN medical record by adding the **LCMC Health** organization



## Can I pay my LSUHN bill through MyChart?



Unfortunately, you cannot pay or view your LSUHN bill through MyChart



Visit [lsuhn.com](https://lsuhn.com) and select "pay my bill" to pay your bill online or follow payment directions found on your bill